

Marker installations and films

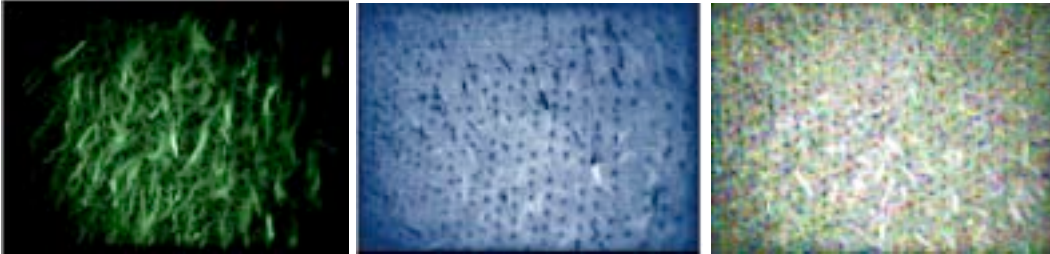
A body of work involving sets of multiples comprising markers in various forms (handcrafted and incorporating re-used material) that could be planted, floated or affixed. 1995-1999.

The following images are stills from super8 animation/filmworks made from the installations.

© Lauren Goode, Bunny Schendler, Claire Taylor

Marker installation animated.

Lauren Goode. London. 1995-96



Soho Square markers

Performance/installation/video. Claire Taylor and Lauren Goode. Screened at the London Musicians' Collective Studio Opening. London 1998



Markers installation/film.

Garden in Essex. Performer: Vicki. Costume: Lauren Goode



Markers and wings

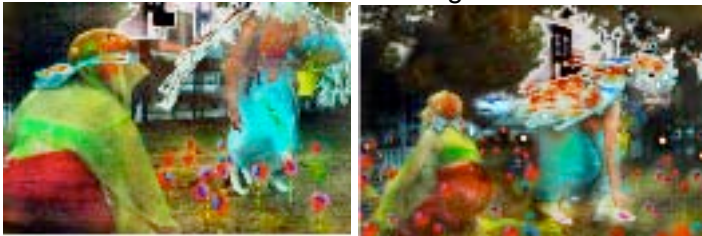
Performance/installation/video. Bunny Schendler and Lauren Goode. Garden location. London 1998.



Markers and wings

Performance/installation/video. Bunny Schendler and Lauren Goode.

Camberwell Green. Midsummer night event. Part of Camberwell Arts Week - Epicurean Delights. London. 1998



Webbing and markers

Performance/installation/film. Sainsburys landscaped gardens. Dulwich, London.

Claire Taylor and Lauren Goode. 1998.

