

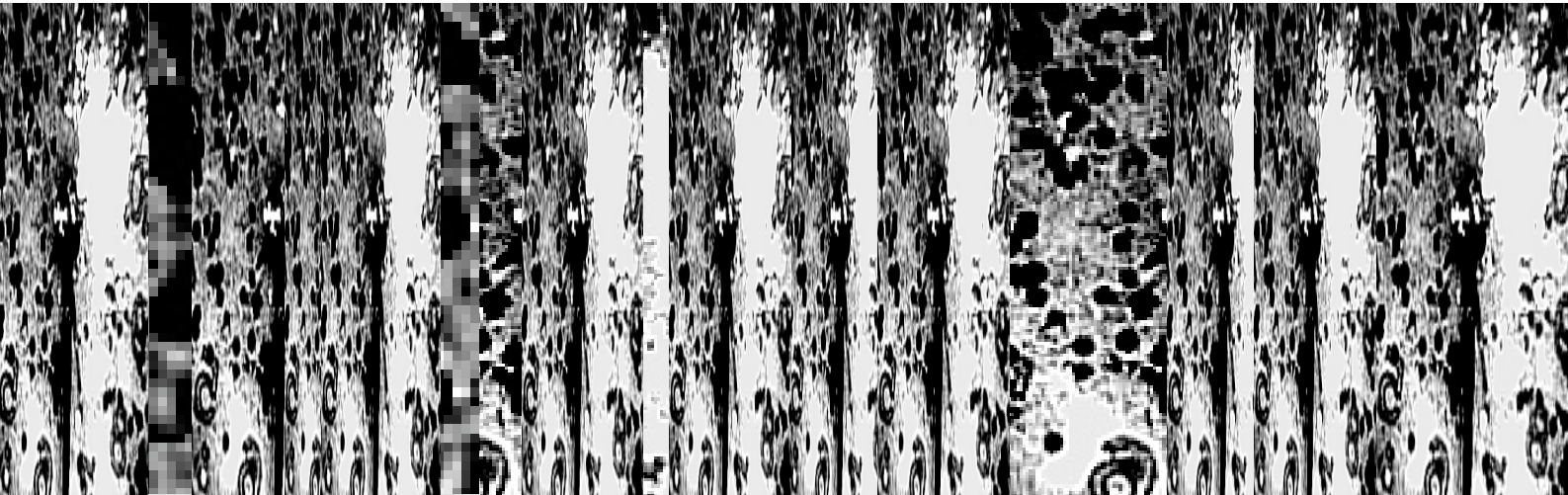
# Artist Review Series

## Immersivity, Art, Architecture, Sound and Ecology

Next event Wed **14 Feb 2007** 14:00-18:00 Small Cinema Hall **Goldsmiths College** London

**Robert Davis, Professor Johnny Golding, Helen Palmer,  
Dr Aura Satz, Jon Thomson & Alison Craighead**

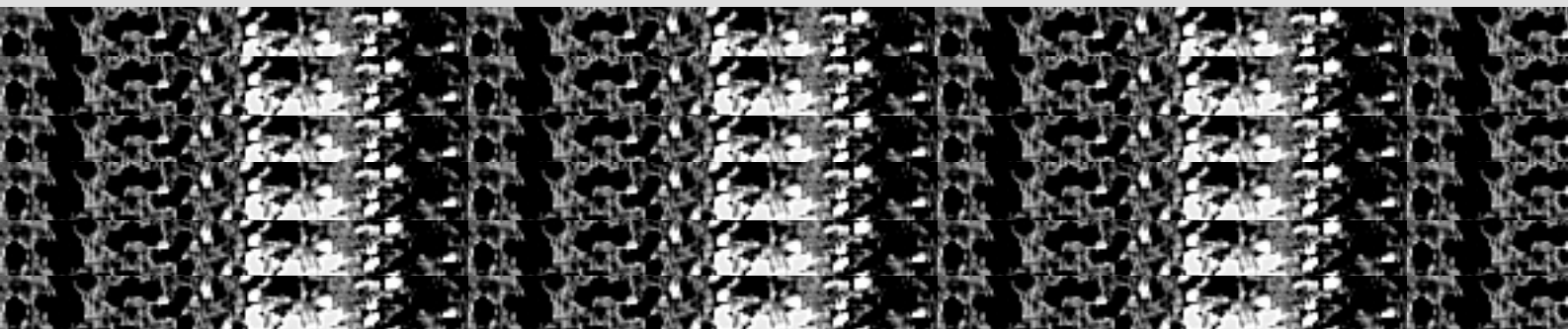
Co-chairs for the series: Dr John Levack Drever, Ian Stonehouse, Lauren Goode



Further info, presenters links and abstracts – please visit the events at [www.liveartgardeninitiative.org.uk](http://www.liveartgardeninitiative.org.uk)

Admission is free but reservation of a place is advisable: email [lauren@liveartgardeninitiative.org.uk](mailto:lauren@liveartgardeninitiative.org.uk) to reserve.

**About the series** Trans-interdisciplinary presentations facilitating critical exchange, discussion and review through an informal and supportive atmosphere; and guided by specific research interests. The general focus areas are: live art and mixed media performance; landscape & interactive architecture and sustainability; critical studies and philosophy; biophysics, acoustics, ecology and sound art. The aims of the artist review meetings are both to support the development of researchers or practitioners, through the sharing and review of recent practice including work-in-progress, and the Live Art Garden Initiative, an art, architecture and ecology project.



**About the Live Art Garden Initiative** The Initiative is to conceive of, set-up and develop an art, architecture and ecology project. The project will involve the creation of new garden environments in which site-specific live arts will be created and receive an audience. The research and practice directions of the Initiative are guided by trans-interdisciplinary research.

[www.liveartgardeninitiative.org.uk](http://www.liveartgardeninitiative.org.uk)

**About the Electronic Music Studios, Goldsmiths College** The Stanley Glasser Electronic Music Studios (established in 1967) comprises a suite of working areas for undergraduate & postgraduate students wishing to explore the creative potential of studio equipment & audio software in relation to composition, live electronics, interactive performance, sound-art, acoustic ecology and research. [www.goldsmiths.ac.uk/departments/music/ems/](http://www.goldsmiths.ac.uk/departments/music/ems/)

**Acknowledgments** Supported by **Networking Artists' Networks Initiative (NAN)** through **a-n The Artist Information Company** and through in-kind support from participating presenters. Co-organised by **Live Art Garden Initiative** and **Electronic Music Studios, Goldsmiths College**

**an** Electronic Music Studios @ goldsmiths